



SAGE MAS 90

SAGE MAS 200

Product Overview



One of the most important decisions you can make for your growing business is choosing an Enterprise Resource Planning (ERP) software that allows you total control, integration, connectivity, and visibility of every facet of your company. A successful ERP system should offer specialized modules that address individual departmental needs, as well as the full connectivity for departments to view and share information and communicate with each other—enabling your business to achieve optimal performance.

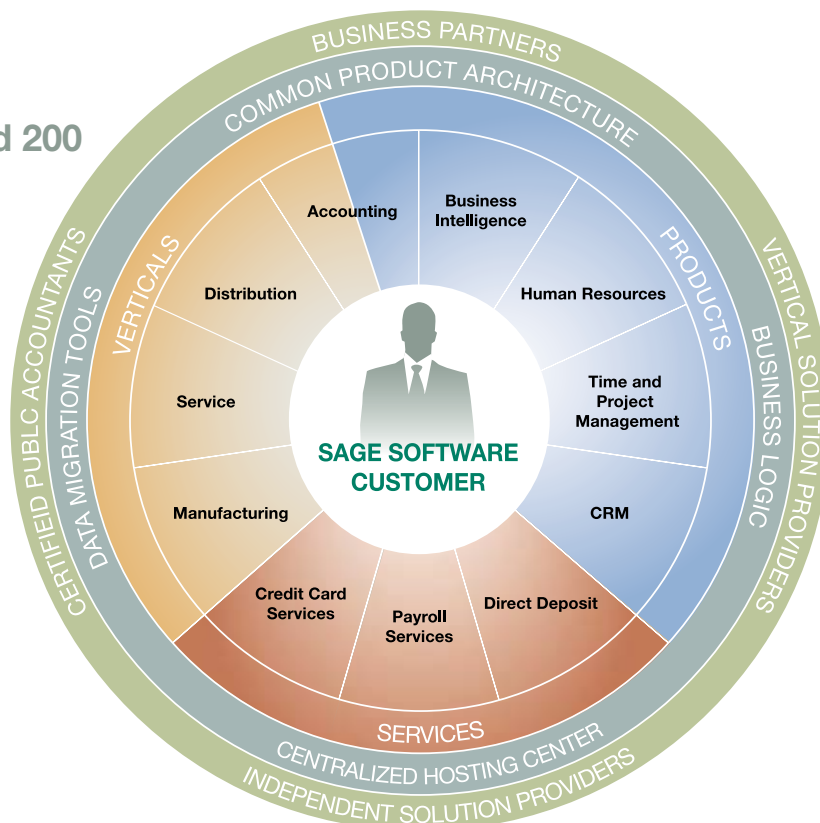
Well beyond the initial software sale, Sage Software helps customers maximize their software investment and further increase efficiencies by surrounding them with products and resources for their success — Sage 360°.

### Gain Instant Visibility with Sage Software ERP Solutions

More small and mid-market businesses choose **Sage MAS 90** and **Sage MAS 200 ERP** systems for their accounting and business management needs than any other software in its class. These easy-to-use, budget-friendly end-to-end business management solutions do more than just present numbers, they offer state-of-the art, proprietary features that allow you to:

- **Transform Raw Data into Actionable Knowledge**  
**Business Insights Explorer** connects you with your data through robust inquiry, drill-down, and drill-around capabilities. Easily and quickly access interrelated records or source documents within the database to improve customer service, closely monitor operations, and work more efficiently.

### Sage MAS 90 and 200 ERP Solutions





- **Access Key Information Fast**

Standard with any Sage MAS 90 or 200 system,

**Business Insights Dashboard** is the ideal tool for busy managers, executives and business owners to keep their fingers on the pulse of what is happening in their business at any given moment.

- **Generate Meaningful, Goal-Oriented Reports**

**Business Insights Reporter** guides you through every step of the process to easily create customized reports to suit your business needs, start to finish.

- **Create Presentation-Quality Reports**

Use **Crystal Reports®** to create virtually any type of detailed, customized report quickly and easily.

- **Utilize Best-of-Breed Capabilities**

Maximize the flexibility of your reports with FRx Desktop to format, restructure, drill-down, and distribute utilizing capabilities not possible using a standard General Ledger financial report.

*"Business Insights Explorer is invaluable in capturing and presenting pertinent company-wide information in one sweep. It allows us to track our new customers, show who we sold to per month, go back in history to look up additional data and many other features that contribute to greater productivity."*

— Sherri Morfin, Controller, Pearson Electronics

**MAS 90 Business Insights Explorer - Customer**

Look For: Search In (All Columns) Find Next

**Customer**

Div: 01 (2 Items)

Div	Customer	Name	Hold	Current Balance	Aging
01	ABF	American Business Futures	No	\$5,732.36	
01	AVNET	Avnet Processing Corp	No	\$7,377.37	
01	BRESLIN	Breslin Parts Supply	No	\$11,828.26	
01	CRMPROS	SageCRM Prospects	Yes	\$0.00	
01	HILLSB	Hillsboro Service Center	No	\$652.86	\$2
01	RSSUPPL	R & S Supply Corp.	No	\$1,915.88	\$5
01	SHEPARD	Shepard Motorworks	No	\$513,339.95	
02	ALLENAP	Allen's Appliance Repair	Yes	\$601.06	\$31.70 \$12.75
02	AMERCON	American Concrete Service	Yes	\$13,743.80	\$0.00 \$0.00
02	ATOZ	A To Z Carpet Supply	No	\$8,732.40	\$0.00 \$0.00
02	AUTOOCR	Autocraft Accessories	No	\$12,940.31	\$6,406.53 \$4,607.18
02	BAVPRO	Bav Protoprice Corp.	No	\$13,587.30	\$3,057.64 \$0.00

<Filter is Empty>

**Customer Contacts**

Contact Code	Contact	E-mail Address	Telephone	Ext	Fax
ARTIE JOHN	Artie Johnson	artie@abf.com	(414) 655-4787	219	(414) 655-4512
JOHN QUINN	John Quinn	john@abf.com	(414) 655-4787	320	(414) 655-4521

Standard view

**MAS 90 Business Insights Explorer - Customer**

Look For: Search In (All Columns) Find Next

**Customer**

Div: 01 (2 Items)

Customer	Name	Hold	Credit Limit	Avail. Credit	Open Order Amt
ABF	American Business Future	No	\$120,000.00	\$97,503.80	\$16,763.84
AVNET	Avnet Processing Corp	No	\$7,500.00	\$122.63	\$0.00
BRESLIN	Breslin Parts Supply	No	\$10,000.00	(\$5,639.86)	\$3,811.60
CRMPROS	SageCRM Prospects	Yes	\$25,000.00	\$25,000.00	\$0.00
RSSUPPL	R & S Supply Corp.	No	\$10,000.00	\$538.26	\$2,375.00
SHEPARD	Shepard Motorworks	No	\$550,000.00	\$36,660.05	\$0.00
HILLSB	Hillsboro Service Center	No	\$10,000.00	\$7,025.52	\$71.62

(Div = 01)

**Customer Contacts**

Contact Code	Contact	E-mail Address	Telephone	Ext	Fax
KENT QUINN	Kent Quinlan	kquinlan@RSSupply.com	(555) 555-5555	123	

Saved setting

*With just a few clicks, Business Insights Explorer provides quick and easy data inquiries, answers to those what-if scenarios, and last-minute must-have executive requests. Personalize and save views so data can be acted on, such as credit and collections calls.*

**Vendor Maintenance (ABC) 5/15/2010**

Vendor No. 01-AIRWAY  
Name Airway Property

Copy From... Renumber... Contacts...

1. Main 2. Additional 3. Statistics 4. Summary 5. History 6. Invoices 7. Transactions 8. Checks 9. P/Ds

Invoice No.	Inv Date	Inv Due Date	Disc Date	Amount	Discount	Balance	Comment
0001053190	5/31/2010	6/10/2010		3,500.00	0.00	3,500.00	Rent On
1053190	5/31/2010	6/30/2010		3,500.00	0.00	0.00	
JUNE-4913	5/31/2010	6/30/2010		25,000.00	0.00	25,000.00	
MAY-4913	5/31/2010			25,000.00	0.00	0.00	
0000106145	5/17/2010	5/30/2010		1,600.00	0.00	1,600.00	
0000106020	5/15/2010	5/30/2010		1,750.00			
0000105019	5/2/2010	5/30/2010		3,500.00			
0001050190	5/1/2010	5/30/2010		0.00			
43-241	5/1/2010	5/30/2010		1,255.00			
0001043090	4/30/2010	5/10/2010		3,500.00			
0001033190	3/31/2010	4/30/2010		3,500.00			

Trans Date	Trans Type	Trans Amount	Discount	Ch
5/31/2010	Invoice	3,500.00	0.00	
5/31/2010	Payment	3,500.00	0.00	5/3

Balance	Current	30 Days	45 Days
31,850.00	31,850.00	0.00	0.00

Find associated details quickly using dual grids. For example, in AP Vendor Maintenance, click on a specific invoice in the top grid and detailed information such as date, type, amount, even check number, is displayed in the lower grid.

Quick and easy dual grid entry is efficient and flexible—personalize by moving fields between primary and secondary grids.

**A/R Invoice Data Entry (ABC) 5/15/2010**

Invoice Number 0100056-IN Batch 00001 Customer... Credit...

1. Header 2. Lines 3. Totals

Quick Row 1

	Item Code	Price	Amount	Description
1	WIDGET	55.250	55.25	8" x 10" Widgets
2	200-DA	88.000	88.00	22" Widget with Hinges
3	287-GA	220.000	220.00	19" Gadget with Wheels
4		.000	.00	

GL Account	400-01-00
Tax Class	NT
Cost	27.500
Unit Of Measure	EACH
Commission	<input checked="" type="checkbox"/>

Net Invoice 363.25

Quick Print... Accept Cancel Delete

## Experience Unparalleled Personalization and Customization Enhancements

Sage MAS 90 and 200 take the complexity out of your accounting and operational processes with customized product enhancements and improved personalization capabilities that are more intuitive and rewarding—allowing you to work the way you want to.

### Streamlined, Personalized Grid Entry

Capitalizing on a **Dual-Entry Grid**, you'll enjoy more efficient, user-friendly data entry and virtually limitless flexibility throughout the entire core accounting suite. You can organize and reorder your more frequently used fields in a primary grid and your lesser-used fields in a secondary grid to maximize entry efficiencies and viewing capacity.

### Simplified Data Transmission

Visual Integrator uses the Open Database Connectivity (ODBC) standard to facilitate data exchange among eligible software applications, while employing safeguards to maintain data integrity.

### Automatic E-mail Notifications

**Business Alerts** sends e-mail notifications whenever a significant event you've defined takes place in your database. Automatic, e-mail notifications inform you, your staff, customers, and vendors of important process date- and time-sensitive events.

### Extended Solutions for Specialized Needs

In order to meet the needs of customers who require unique business solutions, Sage Software has created a selection of more than 1,500 specialized features and functions, called **Extended Solutions**, which are easily added to our core modules.



## Build an ERP System that Meets Your Needs

Adaptability is the key to providing solutions that best suit your business needs. Sage MAS 90 and 200 ERP business management software offers a broad range of modules designed to meet the many needs of virtually any business. Combine modules to build an ERP system optimized for your business, and the resulting integrated system will be more powerful than the individual components.

- **Core Accounting**

Maximize productivity through improved workflow features and flexible personalization capabilities offered by five core accounting software package modules—Accounts Receivable, Accounts Payable, Bank Reconciliation, General Ledger, and Fixed Assets. The depth of functionality is unrivaled among mid-market accounting and ERP software products.

- **Distribution**

Cut costs, build profits, and manage your inventory like never before with Sage MAS 90 and 200 Distribution management solution, featuring Inventory Management, Sales Order, Purchase Order, Return Merchandise Authorization, Bar Code, Credit Card Processing, StarShip Parcel, and StarShip Freight.

- **Manufacturing**

From forecasting to shop floor to completion—receive detailed and accurate tracking and reporting throughout the entire manufacturing process from three powerful ERP manufacturing software modules: Bill of Materials, Work Order Processing, and Material Requirements Planning. The ERP manufacturing software modules for Sage MAS 90 or 200 give you the ability to create multi-level bills and produce accurate, informative reports detailing bill structures. And when goods are finished, they can be stored as inventory or shipped out immediately to fulfill specific customer orders.



*"We looked for a comprehensive package to automate both the accounting and operational sides of our business—something that could maintain batch and lot data, monitor returned products, and provide for a better-informed sales force. One of the most beautiful features of Sage MAS 90 is that it tracks many types of data. It's all very smooth, not only do customers get the information they need, but we can also pinpoint causes of returns to make improvements. The new system easily increased our efficiencies by one third."*

— Kevin Caldera, CPA, Controller, Betachem, Inc.



## e-Business Manager

Maintaining a competitive edge in your market means utilizing your e-commerce capabilities. With e-Business Manager, your customers can securely place an order directly to your system over the Internet, 24/7.

### • Ease of Implementation

Installing and operating the e-Business Manager module is fast and easy, especially if you choose a Sage Host for set up.

### • Selective Functionality

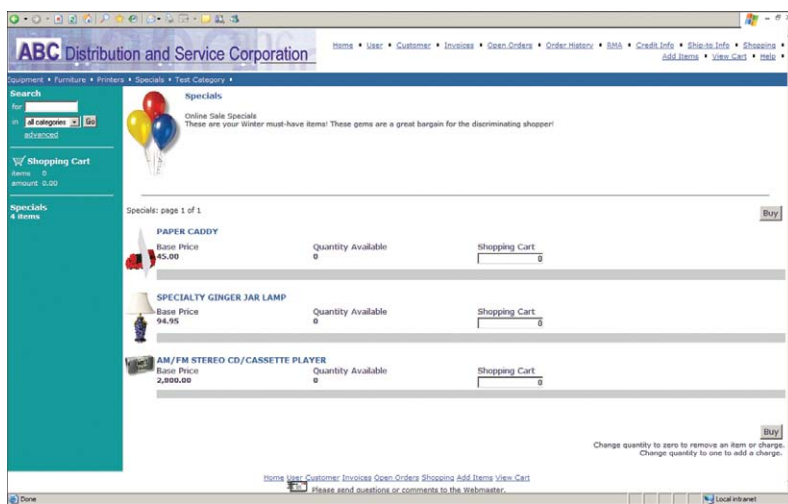
Three mini-modules –.order, .store, and .inquiry – allow your customers to shop, purchase, make account and order inquiries, check their account status and make changes to their information. And you can decide which customer orders require review before they are filled, and which automatically generate a shipment, thus ensuring your best customers receive priority service.

### • Security

For optimal data protection, our Web engine and the Sage MAS 90 or 200 servers are located inside a firewall. Only authorized users, such as your customers, can securely access the data they need and you permit, while others are blocked.

*Thanks to e-Business Manager, we're no longer restricted to 8:00 to 5:00 sales. Many of our regular customers know exactly what they want, and they like the convenience of being able to order online around the clock."*

— Lee Reams II, COO and Owner ImageOne Inc.



▲ Using e-Business Manager, customers can go online, view products, place orders, confirm orders, track deliveries, review invoices and check availability of what they want, anytime they want.



## Human Resource Management

Effectively and efficiently managing your workforce is vital to improve your company's productivity and profitability. Sage Software is the industry-leading provider of comprehensive human resource and payroll management solutions for small- and mid-sized businesses. Sage Abra offers a wide variety of affordable solutions to meet your changing business needs with a full complement of modules for human resource management including benefits, training, recruiting, and compliance, as well complete control over your payroll processing.

## Business Intelligence

Gain instant visibility across your business, as well as boost productivity, functionality and overall business effectiveness. Turn raw data into actionable knowledge with comprehensive business intelligence solutions like customizable and personalizable report generation, inquiry, analysis, e-mail alerts, dashboards, data migration, and reporting tools to create an all-encompassing information management system.

## Customer Relationship Management

Raise service levels, improve loyalty and retention, and boost sales with the help of industry-leading Sage Software CRM solutions. Choose the CRM solution that's right for you—from award-winning ACT! by Sage contact management to Sage CRM or Sage SalesLogix for comprehensive sales force automation, marketing campaign tracking, and customer services management—to better track and communicate with customers and prospects. Your staff will be able to immediately access critical data to readily manage your most valuable asset—your customers.

**Opportunities Dashboard Data:**

Status	Description	Company Name	Person	Opened	Stage	Priority	Territory
Expansion	A To Z Carpet Supply	Allen Ableson	23/08/2007 4:05 PM	Qualified	High	Worldwide	
Allen's Appliance	Allen's Appliance Repair	Jeff Allen	23/08/2007 4:05 PM	Proposal Submitted	Normal	Worldwide	
Remodel Office	American Business Futures	Artie Johnson	14/08/2007 6:10 AM	Proposal Submitted	Normal	Worldwide	
Autocraft	Autocraft Accessories	Max Johnson	23/08/2007 4:15 PM	Lead	Normal	Worldwide	

**History Orders Table Data:**

Order #	Order Date	Status	Div	Customer	Bill To Name	Terms	Customer PO
0000177	10/12/2007	Active	01	ABP	American Business Pl.	Net 30 Days	
0000178	10/12/2007	Active	01	ABP	American Business Pl.	Net 30 Days	
0000174	10/12/2007	Active	01	ABP	American Business Pl.	Net 30 Days	
0000176	10/12/2007	Active	01	ABP	American Business Pl.	Net 30 Days	

*Look up contact information, convert a quote to a sales order, access customer history, and provide up-to-the minute inventory availability during order creation.*

## Sage Value-Added Benefits



### Globally Present, Locally Accessible

You can count on Sage Software for powerful, reliable software that is thoughtfully adapted to evolving technologies and changing business needs. Our customers are supported by a nationwide network of highly trained specialists who are dedicated to providing quality implementation, training, service and support. As your solutions provider, we offer the following value-added benefits:

- Sage Software Business Partners**

Backed by the largest, most qualified channel in the industry, more than 26,000 authorized resellers, consultants and CPAs provide installation, software support and systems integration services.

- Award-Winning Support**

Software maintenance and award-winning ClientCare support programs offer you different combinations to meet your needs: phone access to product experts, 24/7 online knowledgebase access, automatic software updates and regular communications—including 24/7 Anytime Learning classes.

- Regional Training Centers**

More than 30 Authorized Training Centers (ATCs) located across the country, including our corporate training facility in Irvine, California.





- **On-Site Instruction**

Receive expert one-to-one training from Sage Software Certified Trainers.

- **Certified Support Specialists**

All Sage Software specialists undergo intensive training and evaluations to ensure they meet our strict support and product knowledge requirements. This knowledge is shared with your reseller's support team so you always receive exceptional customer service.

- **Specialized Products and Services**

In addition to the full spectrum of add-on modules, custom and pre-packaged modifications and vertical applications are available to further expand the robust capabilities of our software and meet the specialized needs of virtually any business.



---

*"With our Business Partner (BP), we were able to implement many new ideas that were never used before...each and every insole is identified just by looking at one bar code sticker. Without Sage MAS 90, we wouldn't be here today. Without the Sage MAS 90 BP's help, we'd be floundering today. We've come to him with what seems like impossible tasks and he comes back within a day or two and says he has a solution."*

— Rob Craig,  
Production Manager, Amfit

---

## Take Your Business to the Next Level Sage MAS 200 Supports Your Need to Grow



Sage MAS 200 offers all of the same features as Sage MAS 90, but adds the benefits and flexibility of a more powerful and scalable server. For your business, it can deliver significant efficiencies gained in performance and productivity, especially if you have more than one location. Consider stepping up the technology and taking your business to the next level.



## Sage MAS 200 Superbly Supports Your Need to Grow

If your company is large or growing, and has high transaction volume and/or wide area network requirements, then

**Sage MAS 200** is right for you. It's easy to upgrade from Sage MAS 90 to 200 — all the same features, modules, Extended Solutions, and third party solutions that are available for Sage MAS 90 are also available for Sage MAS 200. Sage MAS 200 separates the program logic, processing, and data management tasks from user-interface processing tasks. All program logic, processing and data management tasks are performed on the application server, and all user interface tasks are performed using a thin-client installed on the workstation. The result is less network traffic and more room for transactional growth over the long term for your business.

This client/server version of our software offers you the following functionality:

- **Thin-Client Architecture**

Uses the latest Internet and intranet-compatible, imbedded thin-client architecture to offer top performance in WANs and remote access environments, as well as deliver data at top speed on your local network. Also compatible, but not required, with Citrix and Windows Terminal Services, to offer one hundred percent thin-client architecture across all applications.

- **Designed for Wide Area Networks (WANs)/ Remote Access Environments**

Ideal for multi-site businesses because it is optimized for remote access environments. Virtual Private Networking (VPN) technology securely connects remote offices, significantly reducing costs associated with a dedicated line.

- **Optimized for TCP/IP**

Provides fast, reliable TCP/IP connectivity to facilitate network sharing.

- **Better Performance**

Client/server engine performs smoothly during peak transaction processing and with a large number of accounting users.

- **Enhanced Data Integrity**

Thin-client architecture offers an overall reduction in network traffic, increasing reliability and data integrity system wide.

## Providing Leading Edge Solutions for More than 30 Years

Performance-enhancing software solutions from Sage Software serve the needs of more than 2 million customers worldwide. With **Sage MAS 90** or **200**, you have everything you need to streamline your business processes for maximum efficiency, productivity and profitability. Call today, and find out why Sage Software is the right choice for your business needs—now and in the future.

Sage Software supports the needs, challenges, and dreams of 2.7 million small and mid-sized business customers in North America through easy-to-use, scalable and customizable software and services. Sage Software is a subsidiary of The Sage Group plc, a leading international supplier of business management software and services formed in 1981 and listed on the London Stock Exchange since 1989.



End-to-end solutions. Expert advice. Ongoing support. That's Sage 360®.

**Sage Software**

56 Technology Drive

Irvine, CA 92618-2301

[www.sagemas.com](http://www.sagemas.com) | 800-854-3415

©2008 Sage Software, Inc. All rights reserved. The Sage Software logo and the Sage Software products and service names mentioned herein are registered trademarks or trademarks of Sage Software, Inc., or its affiliated entities. All other trademarks are the property of their respective owners.

5046523 1/08 07-04472